

A CLOSER LOOK AT OUR SOLUTIONS



*Job ready.
Life ready.*



Job ready.
**project:
discovery**



DISCOVER

SOLUTIONS

Project Discovery

What's in a Kit?

Achieve Life Skills

Solutions for...

WHY US?

DIGITAL BADGE
CREDENTIALS

NEXT STEPS



CLICK EACH
SERIES BELOW TO
VIEW CURRICULUM
SAMPLES!

Exciting, hands-on, project-based learning kits with everything your students need to pursue their dreams!



**Career
Awareness**



**Career
Exploration**



Adapted



**Job Skills
Training**

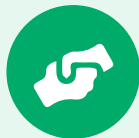
EXPERIENCE OUR CURRICULUM...



HEAR IT



SEE IT



DO IT

SEE ALL OF OUR TITLES!



DISCOVER

SOLUTIONS

Project Discovery

What's in a Kit?

Achieve Life Skills

Solutions for...

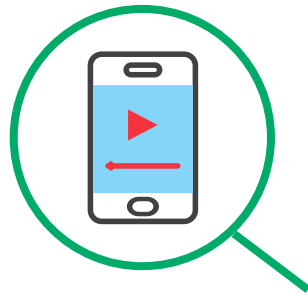
WHY US?

DIGITAL BADGE
CREDENTIALS

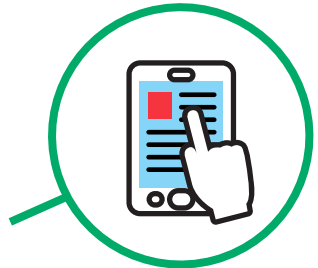
NEXT STEPS

*What's in a kit?
Everything you need...*

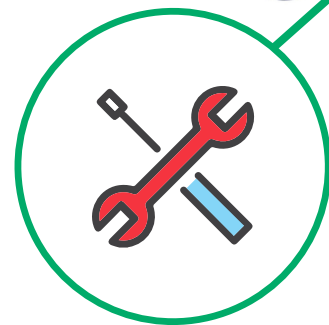
Video Modeling



Assessments



Digital Instructions



Hands-On Tools



PLUS LOTS MORE!

*Learning
made fun!*



Life ready.

**achieve:
life skills**



DISCOVER

SOLUTIONS

Project Discovery

What's in a Kit?

Achieve Life Skills

Solutions for...

WHY US?

DIGITAL BADGE
CREDENTIALS

NEXT STEPS



achieve: life skills
Life Ready.

CLICK BELOW
TO VIEW
CURRICULUM
SAMPLES!



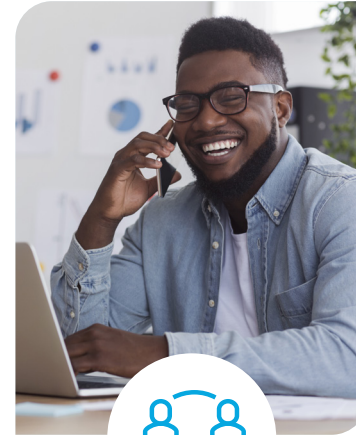
A competency-based approach with everything to prepare your students for employment and a fulfilling, independent life!



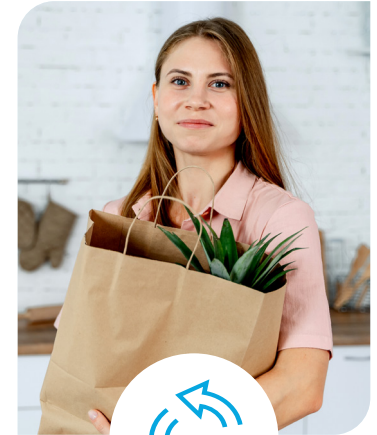
**Job Prep &
Employability Skills**



**Independent
Living Skills**



**Self-Confidence
& Social Skills**



Health & Nutrition

INCLUDED:



2 Levels
of Instruction
per Topic Area



1000+
Hours of
Instruction



450+
Competencies



Digital
Remote Learning
Resources

SEE ALL OF OUR TITLES!

DISCOVER

SOLUTIONS

Project Discovery

What's in a Kit?

Achieve Life Skills

Solutions for...

WHY US?

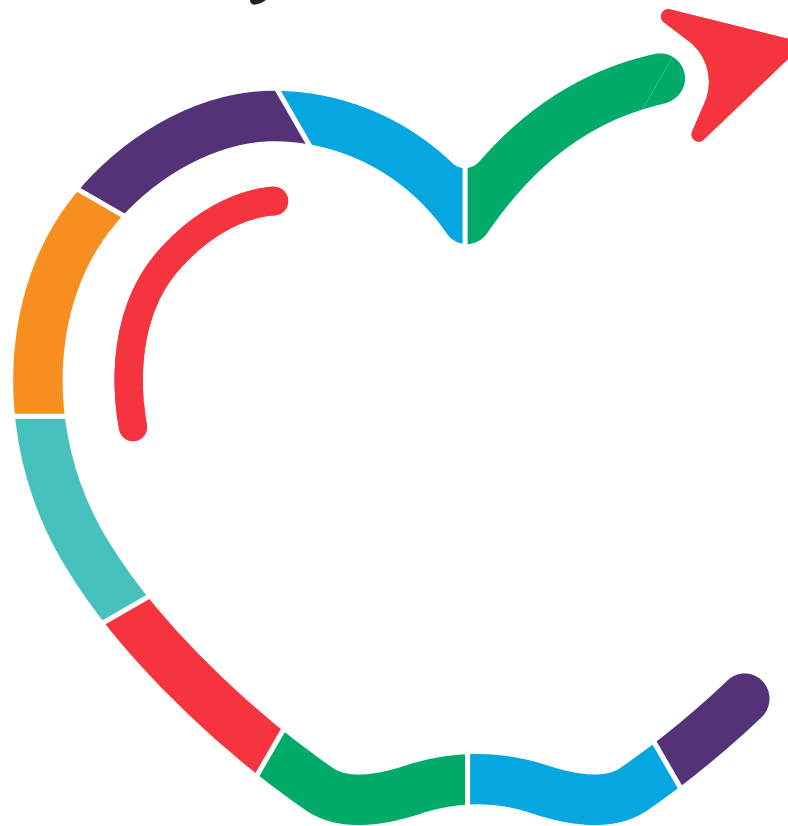
DIGITAL BADGE

CREDENTIALS

NEXT STEPS



*Pick the perfect solutions
for your students.*



“

*We are here to help all your students realize
their **potential** and live their **fullest lives**.*

- STEM for Special Ed
- Social and Emotional Learning (SEL)
- Special Education Transition
- Autism and Intellectual Disabilities
- Employability Skills
- Independent Living Skills
- Adult Job Training
- Financial Literacy

IDEAL FOR...

- Deaf and Visually Impaired
- Remote Learning

DISCOVER

SOLUTIONS

WHY US?

Credibility Counts

Success Stories

Results

Keys to Success

DIGITAL BADGE

CREDENTIALS

NEXT STEPS



case
COUNCIL OF ADMINISTRATORS
OF SPECIAL EDUCATION



APPROVED
& VALIDATED

LEARN MORE!

DISCOVER

SOLUTIONS

WHY US?

Credibility Counts

Success Stories

Results

Keys to Success

DIGITAL BADGE
CREDENTIALS

NEXT STEPS



“

Project Discovery curriculum is our first step in helping students develop their passion and calling.

This is a game-changer for students!

THERESA CORTNEY

Transition and Employment Specialist
Klein ISD, TX

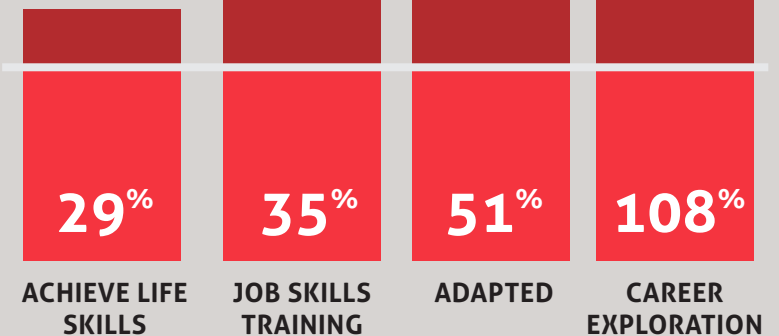
READ MORE STORIES!

*discover
their
passions...*



TEST SCORES SOAR!

We are focused on outcomes. Student test scores increased an average of...



DISCOVER

SOLUTIONS

WHY US?

Credibility Counts

Success Stories

Results

Keys to Success

DIGITAL BADGE
CREDENTIALS

NEXT STEPS



*Your students
deserve the best.*

HANDS-ON

ACADEMIC
& CAREER
INTEGRATION

EVIDENCE
BASED

REMOTE
LEARNING

APPROVED
& VALIDATED

DIFFERENTIATED
INSTRUCTION

PLUS
MORE!

“

*All that we offer reflects an ongoing commitment to best practices and successful outcomes for **every** learner.*

DISCOVER

SOLUTIONS

WHY US?

DIGITAL BADGE CREDENTIALS

NEXT STEPS

Celebrate their accomplishments!



[LEARN MORE!](#)

What are digital badge credentials?



Targeted Job & Life Preparation



Earn Credentials for Skill Mastery



Building Blocks for Resumes



Students Harnessing Control of Their Futures!



DISCOVER

SOLUTIONS

WHY US?

DIGITAL BADGE
CREDENTIALS

NEXT STEPS



Schedule a Zoom Call!

Join us for a personalized 1-on-1
overview Zoom meeting.

ZOOM!



Request a Quote!

Request a personalized
curriculum proposal.

QUOTE!

LET'S MAKE AN IMPACT

Talk soon, friend.





education: associates
Job Ready. Life Ready.®