

NEWS & VIEWS

Tips. Research. Best Practices. Community.

POSITIVE BEHAVIOR INTERVENTIONS & SUPPORTS



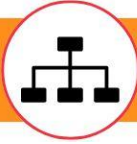
Positive Behaviors, Interventions, and Supports (PBIS) is a framework that can be implemented into a variety of educational environments. The overarching goal is to improve the quality of life for all students through behavioral supports and tiered systemic intervention. In short, PBIS positively reinforces student behaviors that meet expectations and provides supports for students that need assistance. In our May Webinar Wednesday, Valencia Boyd shared practical ways to apply PBIS principles to any educational organization!



Valencia Boyd was our May Webinar Wednesday guest speaker! She is a lifelong educator with more than 32 years of experience in public education as a Math Teacher and Special Education Teacher, Student Services Coordinator, Curriculum Support Specialist, Dean of Students, Assistant Principal of Instruction, Senior Administrator, and Area Administrator. Ms. Boyd has experience in curriculum, assessment, professional development, data analysis, discipline, Restorative Practices, and Positive Behavior Interventions and Support systems.

Ms. Boyd has devoted her professional and personal career to coaching and mentoring others. She is passionate about being a light and helping teachers and students reach their fullest potential. Ms. Boyd currently lives in Fort Lauderdale, Florida. She has two children and one grandchild.

WATCH THE WEBINAR



SIMPLE STRUCTURE

PBIS is comprised of five elements. These elements are the foundation of the framework and are all interconnected. When one is missing, PBIS will not be as successful as it could be. Ensuring that all elements are in place is a great way to monitor effectiveness. The elements are:

- **Equity:** Have high expectations for all students and believe that all students are capable of meeting and exceeding them.
- **Systems:** Prepare and train individuals or teams to properly implement the practices you want to put into place.
- **Data:** As the heart of the framework, data is used to select, monitor, and evaluate other parts of the framework. The systems should use it to make decisions!
- **Practices:** These are the actual mechanisms used to support students and create a positive school environment. An example could be greeting students as they come in the door.
- **Outcomes:** What goals do you have? What things would you like to change in your environment? They can change from year to year, but these will keep your efforts grounded.

**HAVE A CLOSER LOOK AT OUR
EVIDENCE-BASED SOLUTIONS!**

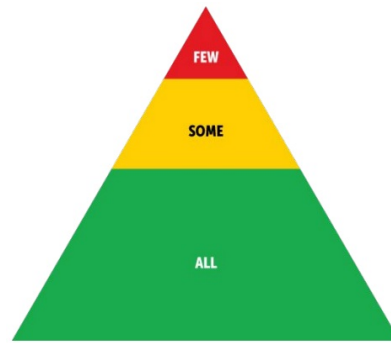
DOWNLOAD A PREVIEW PACKET



TARGETED POPULATIONS

PBIS is truly for all students. We can think about the different practices belonging to different tiers, as seen to the right. The higher the tier, the more supports that are needed. Here is a breakdown of each tier:

- **Tier 1 (All):** This tier is for all students. 80% of students will only be in this tier and can thrive with only these supports. This tier includes any initiative that impacts everyone. *Ex: walking on the right side of the hallway during transitions.*



- **Tier 2 (Some):** This is for students that do not find tier 1 supports to be enough. 10-15% of the population could be in this tier. *Ex: pulling students for social skills training a few times a week.*
- **Tier 3 (Few):** In many cases, students here are high risk, but there are many factors that could make a student high risk in different areas. This tier has about 5% of the population. These students need individualized support. *Ex: Students may work with social workers.*

LOOKING TO LEARN MORE BEST PRACTICES?

Sit back, relax, and watch our past
Webinar Wednesdays at home.

WATCH NOW



EFFECTIVE FRAMEWORK

Utilizing a consistent framework across all tiers helps embed PBIS throughout the environment. Here are some things to include in your framework:

- **Shared vision for a positive school culture:** everyone will have a different idea of what this looks like. Get everyone on the same page to work toward the same goal!



Interventions, when they are implemented with fidelity... are successful at changing behavior.

- V. Boyd



- **Actively engaged families:** give parents a seat at the table. Explain to them why you're implementing PBIS and share the research behind the method. Allow them to ask questions and partner with them for

the betterment of their student.

- **Disaggregating data among subgroups to determine equity:** make sure that all students are being given the same opportunities.

IMPLEMENTATION TIPS

Everyone has a role in implementing a framework like PBIS because it impacts all levels of an organization! Don't be afraid to get support when it comes to implementing this where you are. Based on your role, here are some things you can do to implement PBIS:

- **Classroom teacher:** Establish a system for defining, teaching, and responding to behaviors in the classroom and implement them with your students.
- **School leader:** Assess what is already in place in your school and gather a leadership team before rolling out new initiatives.
- **District/state leader:** Contact state PBIS coordinator and go to pbis.org website for resources.



HAVE A QUESTION?

Chat with us on our website!



THE END OF THE YEAR JUST GOT BETTER!

Take advantage of these end-of-year specials and get a head start on planning for fall. Learn more about each special by opening the flyers!

YOU PICK 8
Adapted Titles

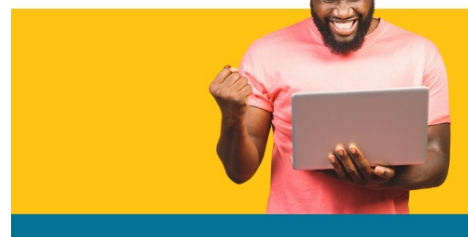
**BUILD YOUR PERSONALIZED
CAREER EXPLORATION PROGRAM!**

**LIMITED
TIME
ONLY**



**Get A Year of
Student Fees, On Us!**

 **achieve.**



[OPEN FLYER](#)[OPEN FLYER](#)

Ready to get started? Schedule a discovery call today to determine which solution is right for you!

[LET'S GO!](#)

DID YOU HEAR THE NEWS?



'Pure joy': East Texas Special Needs Prom in Longview gives all teens a chance to dance

[READ MORE](#)

4th annual Tri-State DisAbility Art Show in NJ showcases work from students with disabilities

[READ MORE](#)

Student who is blind pursues her dreams with the help of her teachers

[READ MORE](#)

LIKE, FOLLOW, RETWEET, REPEAT!



Education Associates | P.O. Box 23308, Louisville, KY 40223

[Unsubscribe](#) admin@educationassociates.com

[Update Profile](#) | [Constant Contact Data Notice](#)

Sent by timothyhagan@educationassociates.com